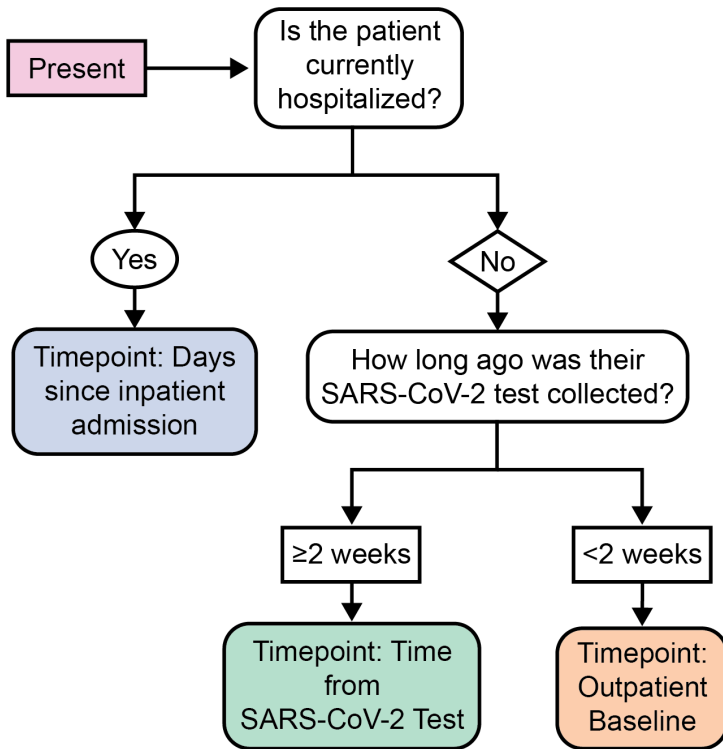
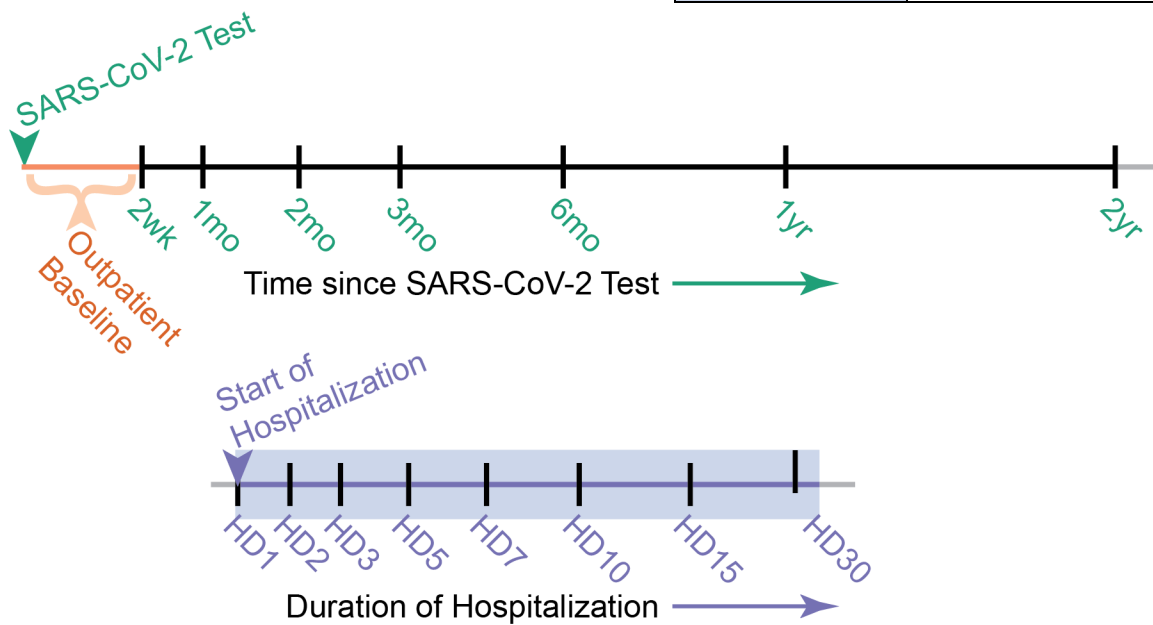


NCCAPS Tip Sheet for Specimen Collection Timepoint Classification – Updated 8/4/2020

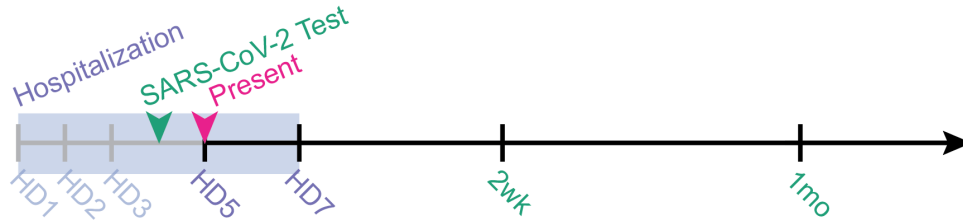


Timepoint	Description
Outpatient Baseline (Step 1)	Patient is not currently hospitalized and it has been less than two weeks since their SARS-CoV-2 test collection.
2 Weeks; 1, 2, 3, 6, 9, 12 Months; 2 Years from SARS-CoV-2 Test	Patient is not currently hospitalized and it has been at least 2 weeks since their SARS-CoV-2 test collection. Select the timepoint corresponding to the <i>time since the patient's SARS-CoV-2 test collection</i> .
Hospital Day 1, 3, 5, 7, 10, 15, 30	Patient is currently hospitalized. Select the timepoint corresponding to the <i>days since the start of hospitalization</i> .

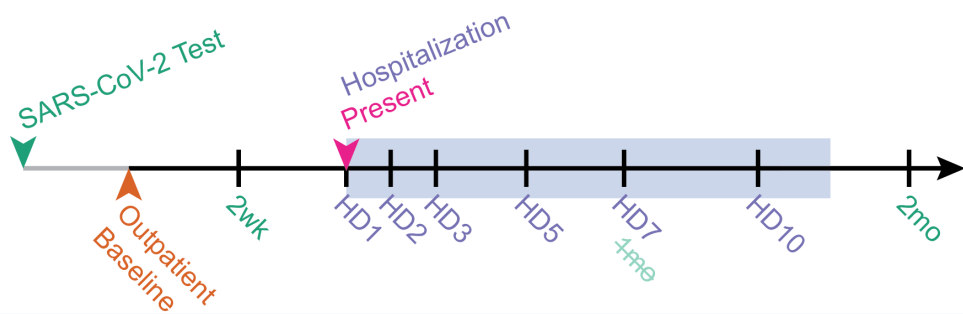


Examples; Timelines not to scale:

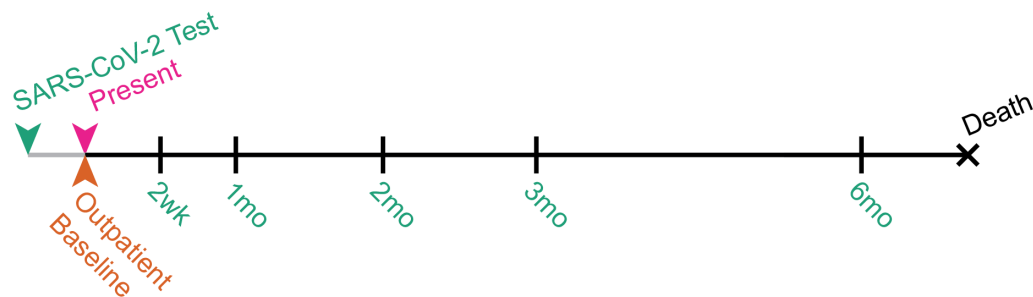
- James Kirk is currently hospitalized and is being enrolled into NCCAPS. He was admitted 5 days ago. Use the timepoint Hospital Day 5 for his 1st specimen collection. Follow inpatient timetable until discharge, then follow outpatient specimen collection timetable starting at 2 weeks.



- Kathryn Janeway was tested for COVID-19 three weeks ago and was enrolled two weeks ago. She was hospitalized today. Use Hospital Day 1 as the current specimen collection timepoint, then collect specimens as outlined below during hospital stay. Outpatient 1 month specimen does not need to be sent. Return to outpatient specimen collection timetable at 2 month timepoint.



- Beverly Crusher was tested for COVID-19 4 days ago and is being enrolled into NCCAPS. Use the Outpatient baseline timepoint for the 1st specimen collection and then follow the outpatient specimen collection timetable.



- **For Pediatric Patients Only:** Jake Sisko was tested for COVID-19 6 months ago, was hospitalized and discharged to outpatient care. He is being retroactively enrolled. Use the outpatient timepoint 6 Months from SARS-CoV-2 Test.

